

LAND SUITABILITY FOR POTATO (Season 1)

Potato suitability

- Highly suitable
- Conditionally High Suitable
- Moderately Suitable
- Conditionally Moderately Suitable

Agricultural Suitability of Land

- High Potential
- Moderate Potential
- Water Bodies
- Isohyets



1:100 000

-19°48.00'

-19°48.00'

-20°6.00'

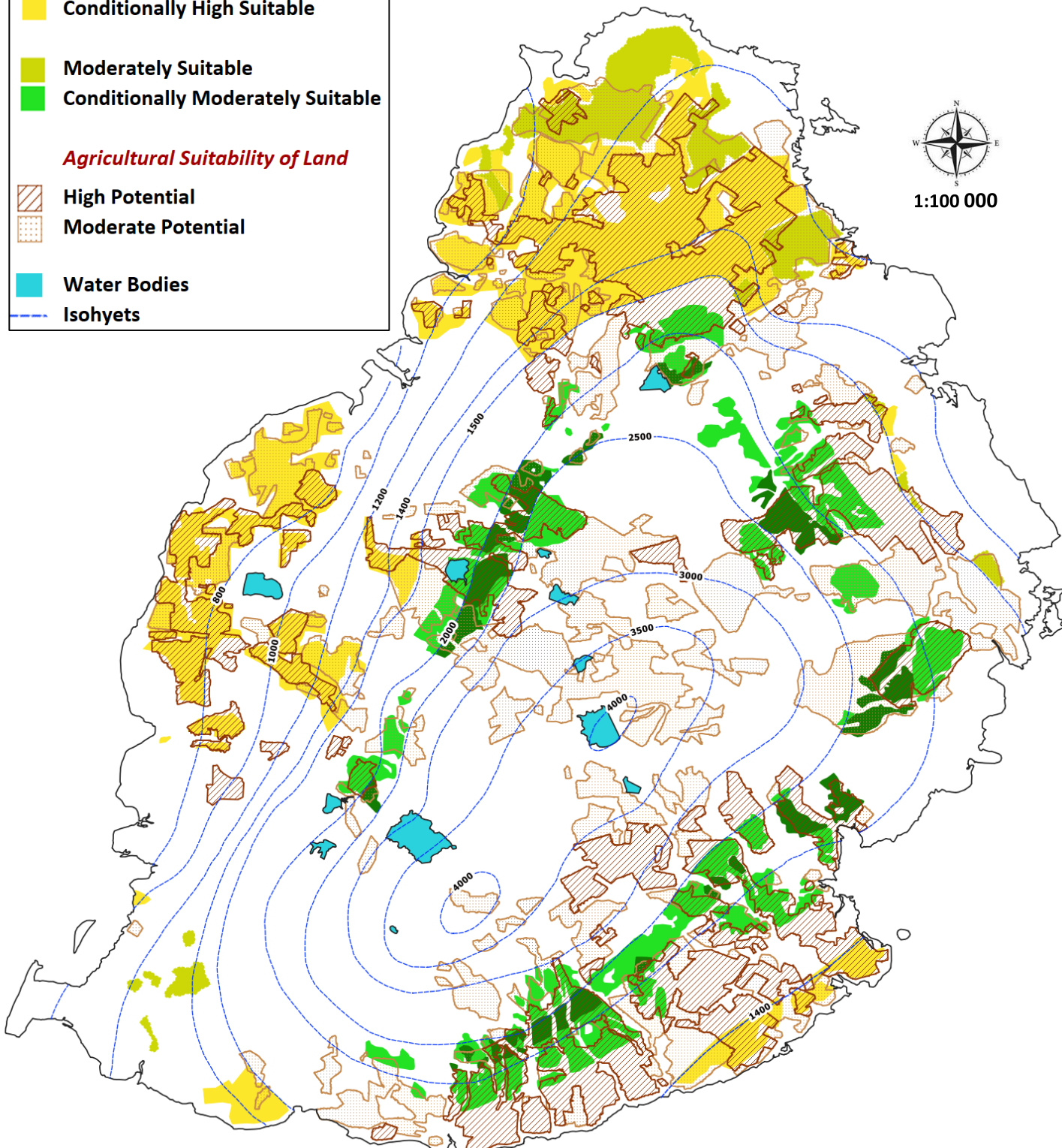
-20°6.00'

-20°24.00'

-20°24.00'

-20°42.00'

-20°42.00'



This map was generated using the 2008 Suitability for Potato (Season 1) Map and the 2025 Land Suitability (Agricultural Potential) Map of Mauritius, both developed in the GIS Unit.

WGS 84 – 40 S
GIS-Remote Sensing Unit, MSIRI, MCIA
7 April 2026
/r mahadea nemdharry



©