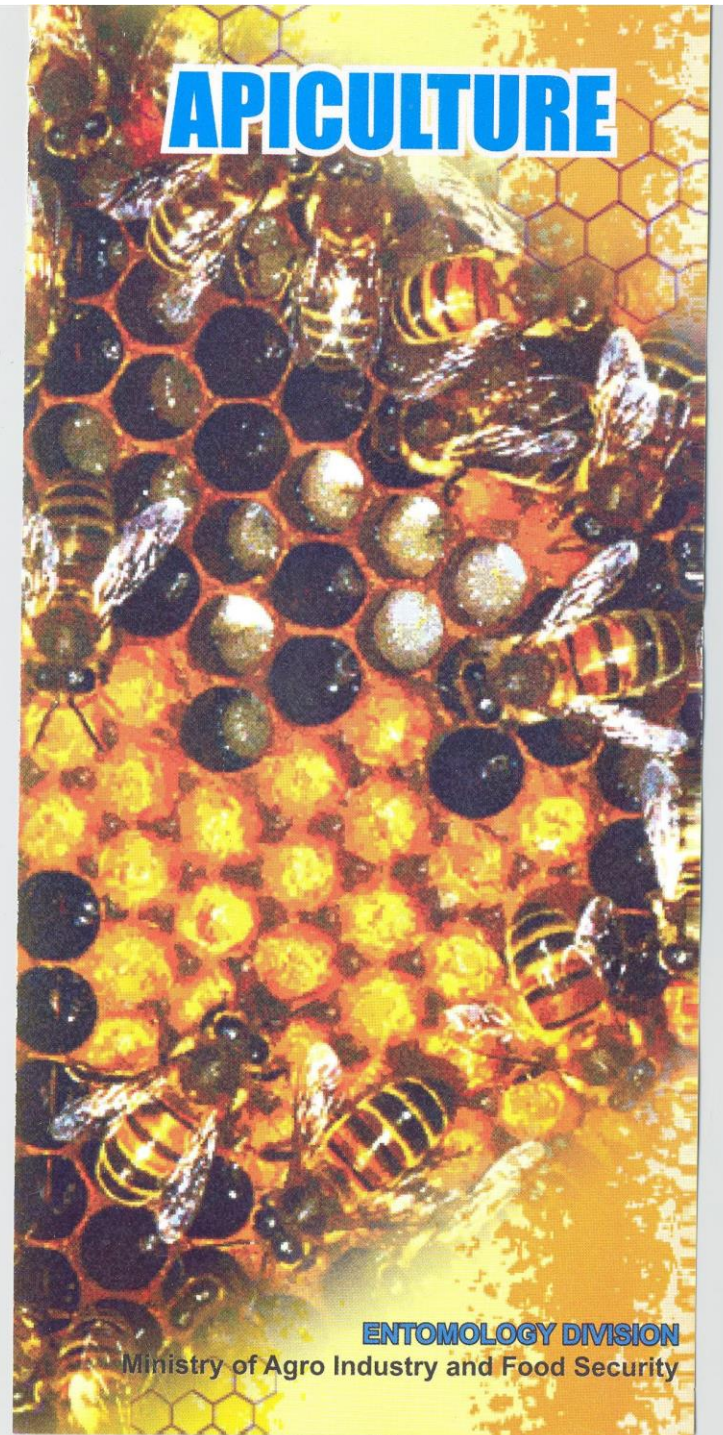
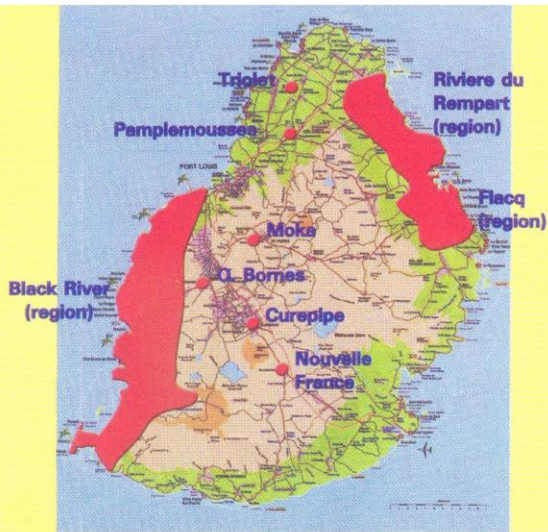


APICULTURE



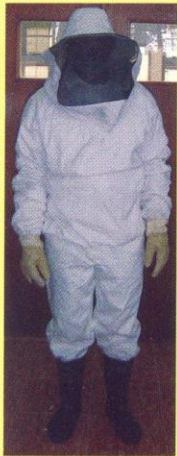
ENTOMOLOGY DIVISION

Ministry of Agro Industry and Food Security



Map of Mauritius showing main apicultural sites

Beekeeping equipment

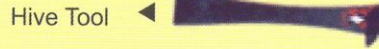


► Hat, Veil, Overall, Gloves and Boots

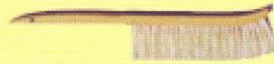
new equipment



► Smoker



Hive Tool ◀

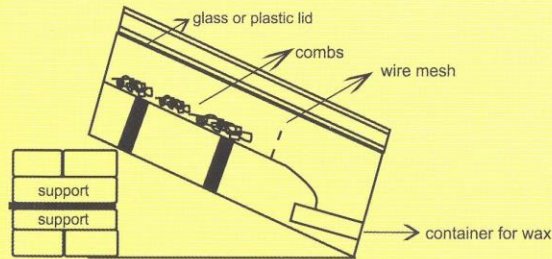


► Bee Brush



Honey Extractor ◀

Solar Wax Extractor- Side View



Wax foundation sheets are placed on frames to accelerate comb preparation by workers.



Pests

Common Pests	Scientific Name
Braula	<i>Braula pretoriensis</i>
Greater Waxmoth	<i>Galleria melonella</i>
Lesser Waxmoth	<i>Achroia grisella</i>
Dead head moth	<i>Acherontia atropos</i>
Nosema	<i>Nosema apis</i>
Ants	<i>Monomorium floricola jerdon</i>
Frog	<i>Bufo regularis</i>
Cameleon	<i>Calotes versicolor</i>
Cockroaches	<i>Periplaneta americana</i>

Honey Harvest

Honey harvest depends on several factors namely abundance of nectar flow from melliferous plants, prolific queens that produce plenty of worker bees and the use of wax foundation sheets to facilitate the bees. Honey is removed with a honey extractor and the frames with the comb are returned to the hive.

For more information, please contact

Apiculture Unit, Entomology Division
Réduit
Ministry of Agro Industry & Food Security

Tel: 454 6390, 401 2800, 465 8652

Fax: 466 6434

e-mail: moa-entomology@mail.gov.mu
<http://agriculture.gov.mu>



REPUBLIC OF MAURITIUS



APICULTURE

Apiculture is the art of keeping bees in a domesticated way for easy management, easy honey harvest and control of bee pests and diseases.

Honey is a form of invert sugar, that is a mixture of glucose and fructose. It contains also minerals, vitamins and antibiotics.



A bee colony comprises of 3 different kinds of bees namely a queen, drones and worker bees.



Worker



Drone



Queen



The queen bee is the mother of the hive. Its main role is to lay eggs. A normal hive accommodates only one queen bee.

The drone is the male of the hive. Its main function in the hive is to mate with the virgin queen in the air at the nuptial flight. It dies after mating. The number of drones varies between 400-500.

Workers are unfertilised females and their roles in the hive are to collect nectar, pollen, propolis and water. They feed young and developing larvae, carry out ventilation for regulating the temperature inside, remove excess of water from nectar and guard the hive entrance against enemies.

The number of workers in a bee colony varies between 20,000 to 60,000.

Melliferous Plants

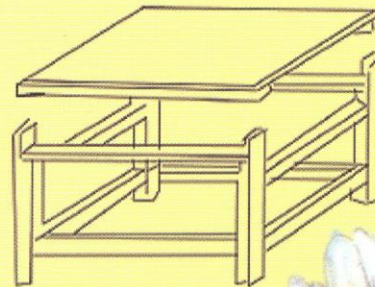
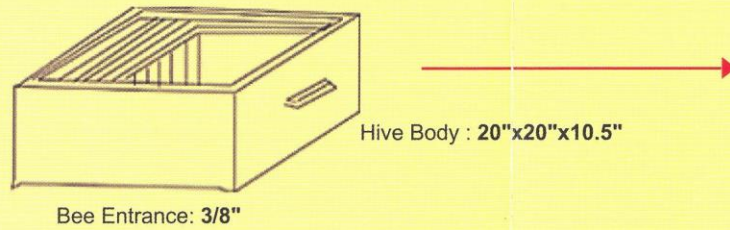
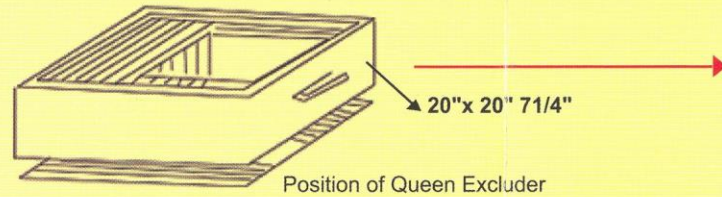
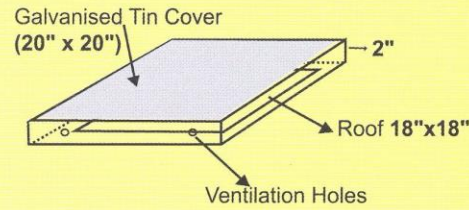
Bees depend on melliferous plants for their pollen and nectar. The table below shows the flowering periods of the main melliferous plants in Mauritius.

Melliferous plants	Flowering periods		
Longan			
Tamarind	Jan		Dec
Wild Pepper		Feb	Mar
Campeche			
Eucalyptus (white)			Nov
Eucalyptus (red)		Feb	Mar
Letchis	Aug		

Bee hive with movable frames

bee hive with movable frames

- 4
- 3
- 2
- 1



Frames

